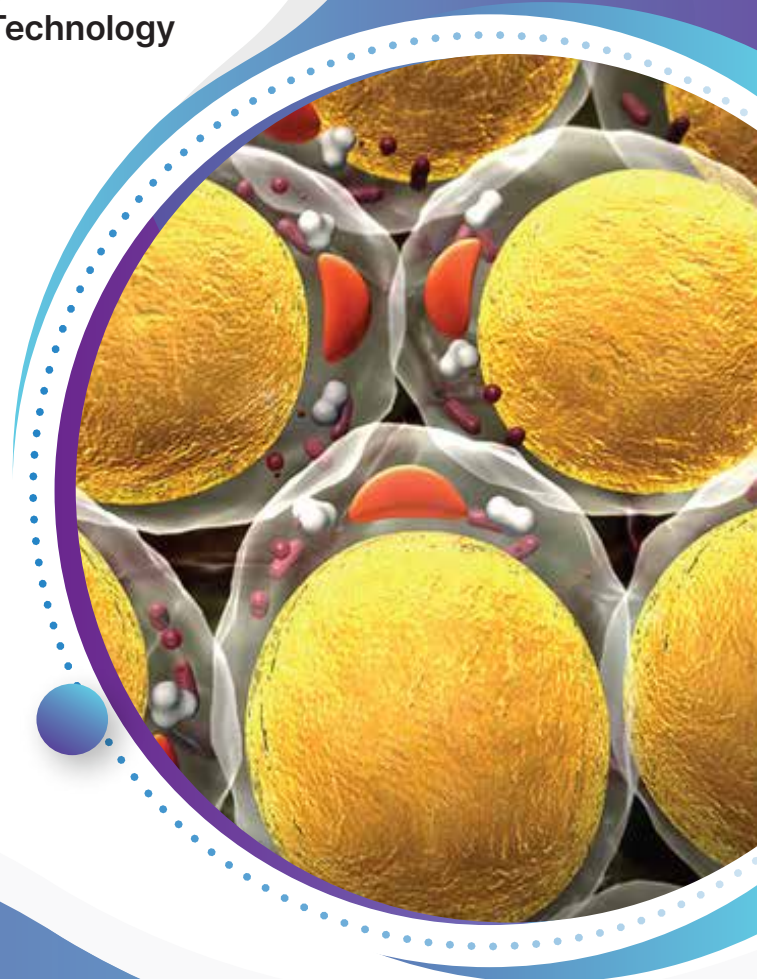


SONISTEM

Ultrasonic Adipose Derived Stem Cells Technology





Vision

To alleviate human suffering through regenerative tools and technologies, thereby contributing significantly towards betterment of human life.



Mission

"Affordable Regenerative Technology for everyone."

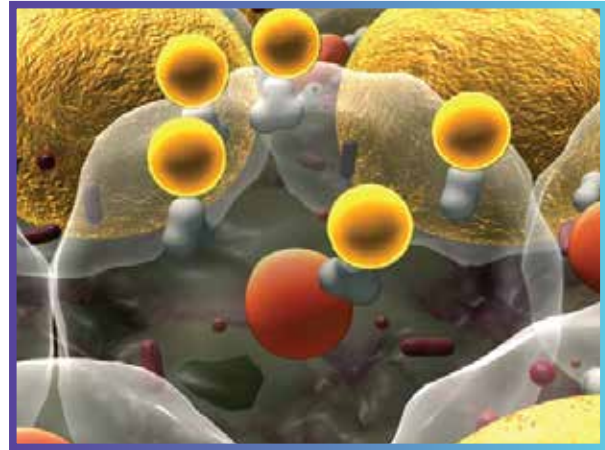
CONTENTS

DISCOVER THE REGENERATIVE POWER OF FAT	05
WHAT IS STROMAL VASCULAR FRACTION	06
WHAT IS SONISTEM™ ?	07
HOW DOES IT WORK ?	08
THE SONISTEM™ WAY	08
FEATURES	09
WHY SONISTEM™ ?	10
WHERE IS IT INDICATED ?	11
IS JOINT PAIN TROUBLING YOUR PATIENTS ?	12

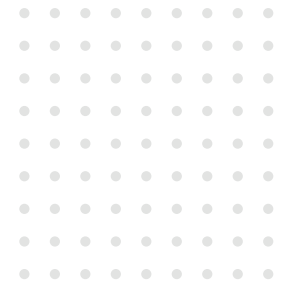
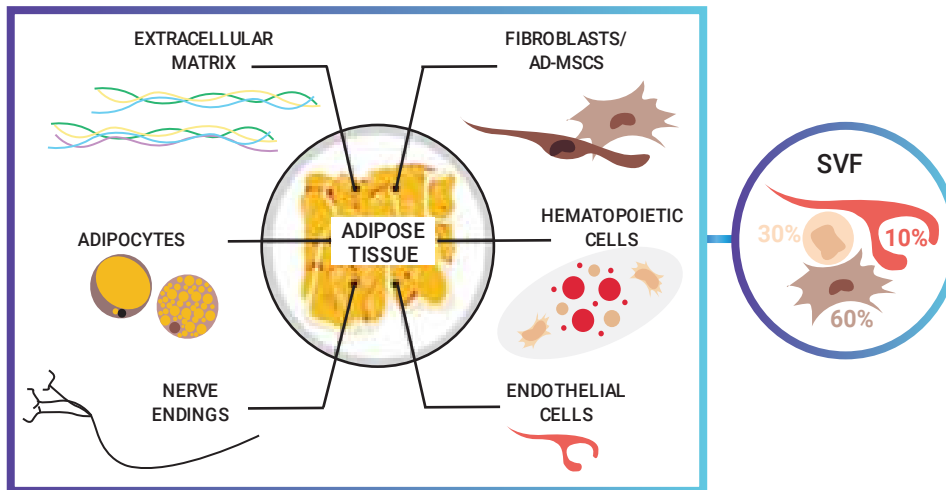


DISCOVER THE REGENERATIVE POWER OF FAT

Fat is a versatile tissue that plays essential roles in the way our body functions with good healing potential. FAT has 100-500 times more reparative cells than other similar tissue. Adipose tissue contains a specialized tissue microstructure that contains important reparative cells like adipocytes, pre-adipocytes, pericytes, microvasculature and other cells incorporated into a dense collagen matrix. A key component of adipose tissue is the Stromal vascular fraction (SVF) which is enriched with growth factors and progenitors cells higher than any tissue needed for tissue healing and regeneration.

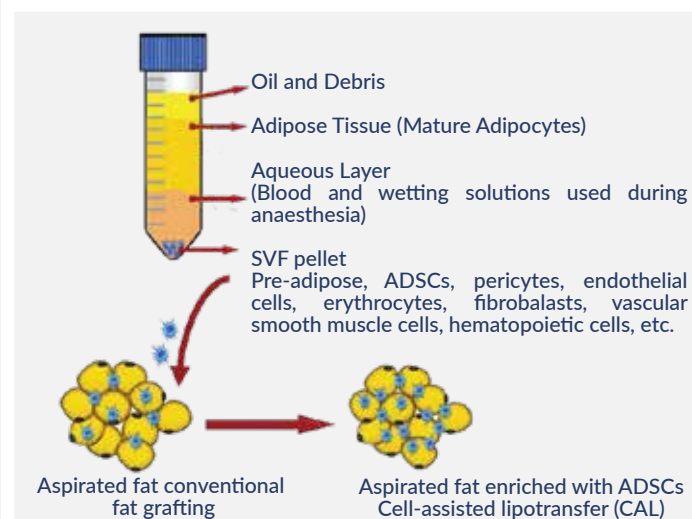
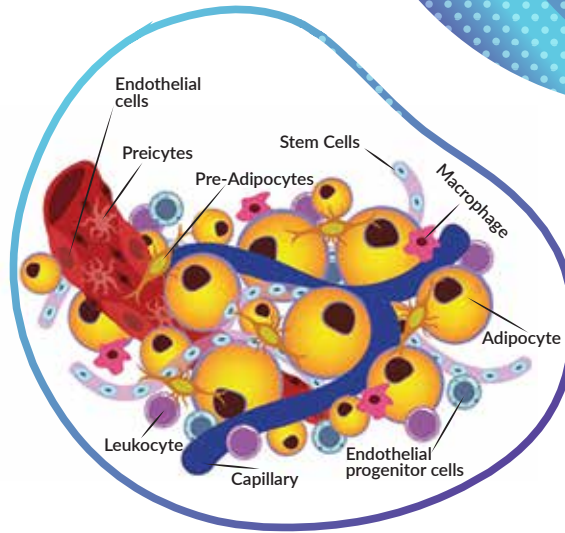


LEVERAGING YOUR FAT CELLS TOWARDS TISSUE REGENERATION



WHAT IS STROMAL VASCULAR FRACTION

SVF is mainly composed of endothelial cells, hematopoietic cells (B, T, and NK lymphocytes, macrophages, granulocytes, mast cells, etc.) and progenitor cells usually known as AD-MSCs, 40, 41 as well as fibroblasts that secrete the ECM, which includes mainly collagens and elastin. Stromal vascular fraction (SVF) is a component of the lipoaspirate obtained from liposuction of excess adipose tissues. It contains a lot of stem cells or adipose derived stem cells which has multilineage ability.



01

Aid tissue regeneration and stimulate neoangiogenesis

02

Release a high concentration of growth factors

03

Contribute to dermal tissue reconstruction

WHAT IS SONISTEM™ ?

SONISTEM™ is an innovative non-enzymatic technology for processing adipose tissue for repairing degenerative tissues.

SONISTEM™ is an ultrasound device for non-enzymatic Stromal Cell (S.V.F) isolation. The physical power of ultrasound replaces the time-consuming enzymatic process that is required mixing, warming and activation.

Fat tissue-filled tubes are broken down into fine particles and SVF is isolated with high Cellular yield using the ultrasonic vibration technology of SONISTEM.

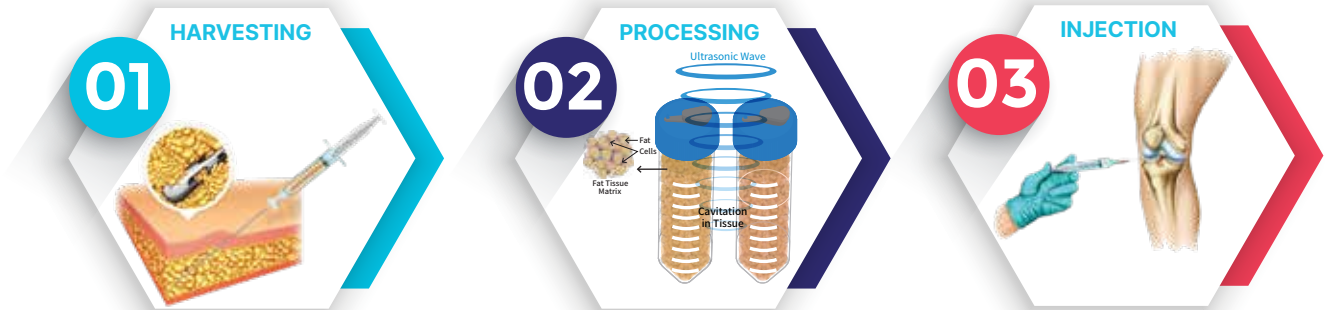


- **Easy To Process**
- **100% Enzyme Free**
- **Excellent Cell Viability**



HOW DOES IT WORK ?

PROCEDURE OVERVIEW

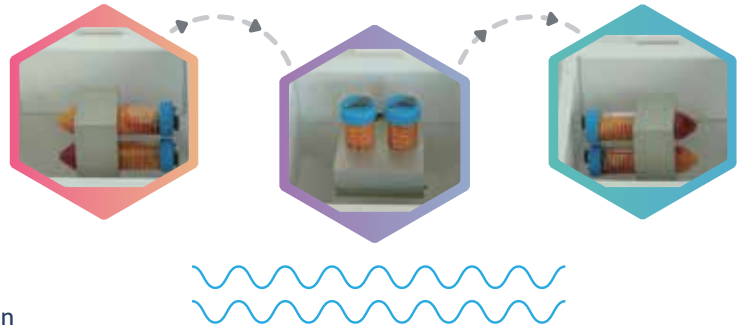


THE SONISTEM™ WAY



FEATURES

- ▶ Portable Bench-top Model
- ▶ Automated Sample Volumes
- ▶ compact point of care process
- ▶ Real time processing and output
- ▶ Ultrasonic processing with 180° Rocking
- ▶ Maximizes tissue softening and distribution
- ▶ Closure your design preventing cross-contamination



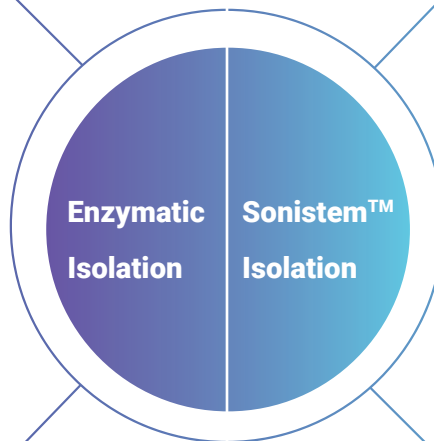
Non-Minimal Manipulation ●

Chemical Dissolution by collagenase ●

Expensive by more tools ●

Lot-to-lot enzyme activity inconsistency ●

Time-Consuming : 1~ 2 Hours ●



● Minimal Manipulation -Xeno Free

● Physical Micro Vibration by ultrasound

● Lower cost by less tools & less labor

● Consistent operation by machine

● Rapid Process : 15 mins

WHY SONISTEM™?



QUICK AND EASY



SIMPLE CONVENIENT MODEL



DAY CARE PROCEDURE



SHORT HOSPITAL STAYS



CLOSED AND STERILE
PROCESSING UNIT



PAIN AND HAZZLE-FREE
MECHANICAL SEPARATION

ALL IN ONE CART

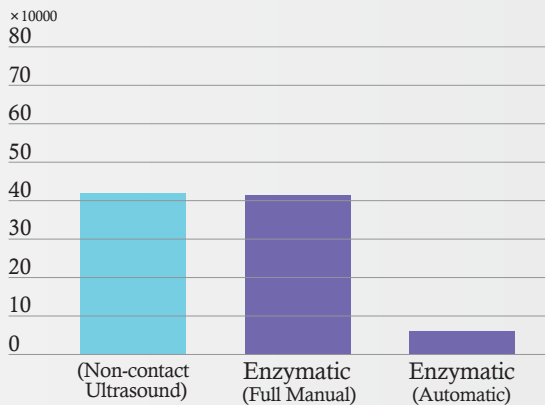
Minimal & Portable SVF Package
for in-office isolation process



PERFORMANCE DATA

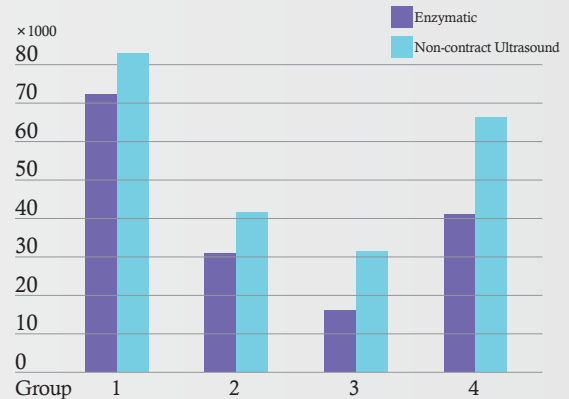
Excellent Harvest Rating

Stromal Cells Counts
(in 1cc Adipose Tissue)



High Cell Counts and Viability

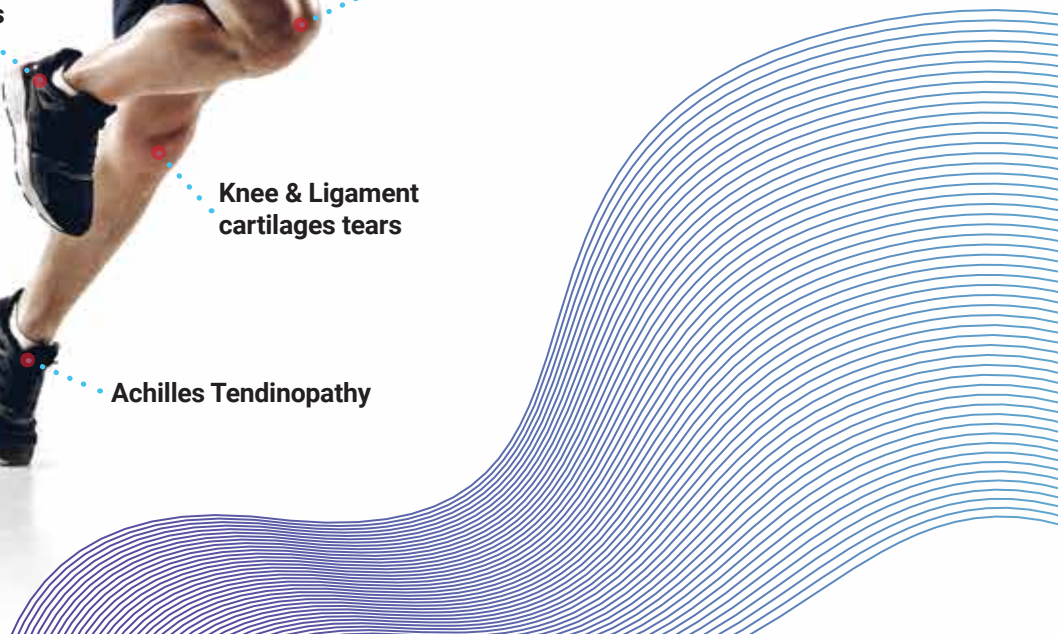
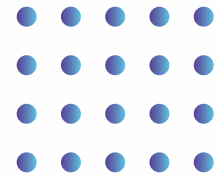
Stem Cells Counts
(in 1cc Adipose Tissue)



Viability is more than 80% and Debris is lower than enzymatic isolation.

POTENTIAL INDICATIONS

Sonistem™ can be used as an adjunct to orthopaedic or arthroscopic surgery or as a minimally invasive procedure to provide cushion and support to aid the natural healing process to reconstruct or repair damaged or injured tissue.



IS JOINT PAIN TROUBLING YOUR PATIENTS ?



Contact us for the latest Fat based Regenerative Solution

SONISTEM

Exclusively brought to you by



+91 95000 80399
+91 95000 76025



support@tricellbio.com
www.tricellbio.com



Plot No.4&5, Dhanarajapuram,
Kolathur, Chennai-600099.

Disclaimer:

Most data presented in this brochure are based on published studies carried out in different parts of the world. Health-related information and opinions change frequently and therefore information contained in this brochure may be outdated, incomplete or incorrect. The information, statements and images provided in this brochure is for informational purposes only and should not substitute advice provided by the treating physician.